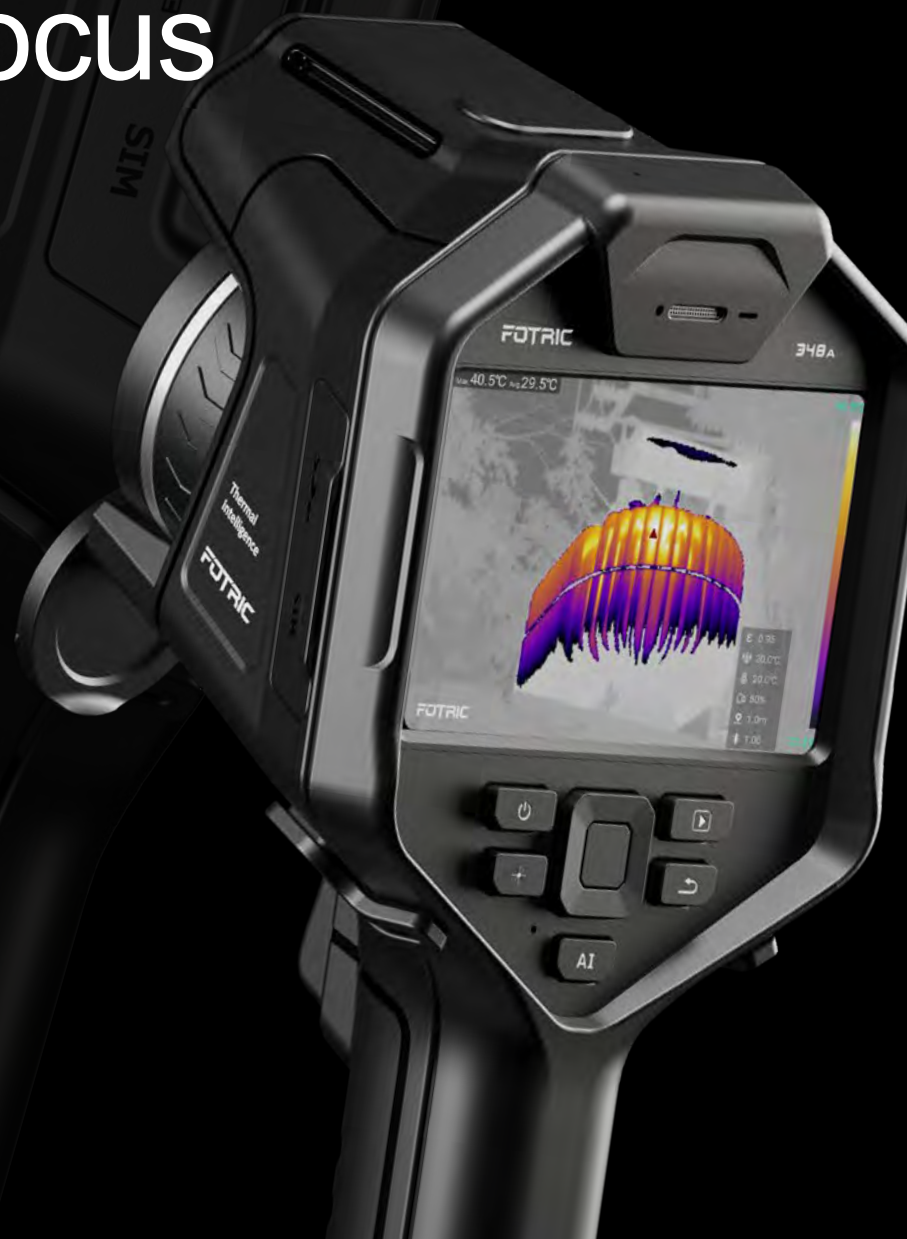


Termocamera Professionale Avanzata Autofocus

- Campi Temperatura da -20°C fino a 1200°C
- Risoluzione termica fino 640x480 (30Hz)
Risoluzione immagini fino 1280x960
- Obiettivi intercambiabili 44°, tele 12° e 7°
- Sensibilità Termica NETD 0,04 °C
- Ampio Display LCD Touch da 5" gorilla glass
- Facile da usare: autorange, hotspot, aree
- Messa a fuoco automatica con puntatore Laser
- FotoCamera Visibile da 13MP con Flash/Led
- Tecnologia Mix/PictureInPicture (IR con Visibile)
- Memorizzazione Video e Immagini Radiometriche su memory card TF 128 Gb
- Annotazione Vocale integrata, testo e QR code
- Interfaccia USB-C 3.0, Bluetooth, Wifi e HDMI
- Software Reporting Avanzato per Windows
- Pacchetto Batterie Ricaricabile LiION sostituibili in campo con caricabatterie interno/esterno
- Leggera (1Kg) e Robusta IP54, test caduta 2mt



Superior Imaging

FOTRIC's imaging enhancement algorithm, such as TWB and IREdge, allows advanced imaging performance under complex diagnoses.

Cutting-edge Images

Exceptional resolution for sharp and bold images:

- Large 5" LCD vibrant screen of 1280*720 pixels.
- Extra sharp digital camera of 13-megapixels.

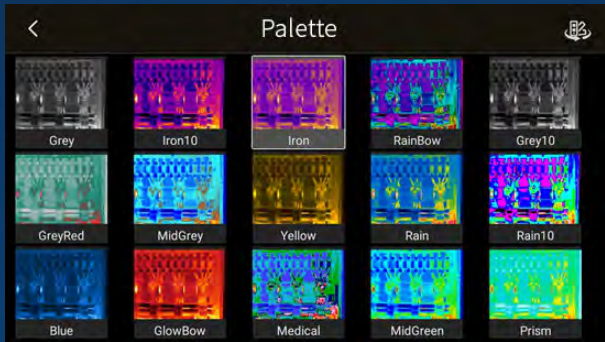
Magic at your fingertips

- Touch specific areas to enhance its temperature gradients' color display.
- Enhanced navigation of Image fusion for more flexible editing.



Boosted Performance

- Hand work eased like never before with programmable AI Quick-Access button.
- Complimentary access to Face Detection feature.



Switch to "Palette"



Switch to "Touch Scale"



Switch to "Picture-in-Picture"

Adjust for "Measurement Range"
Adding "Voice Annotation"
Switch for "QR Scanning"



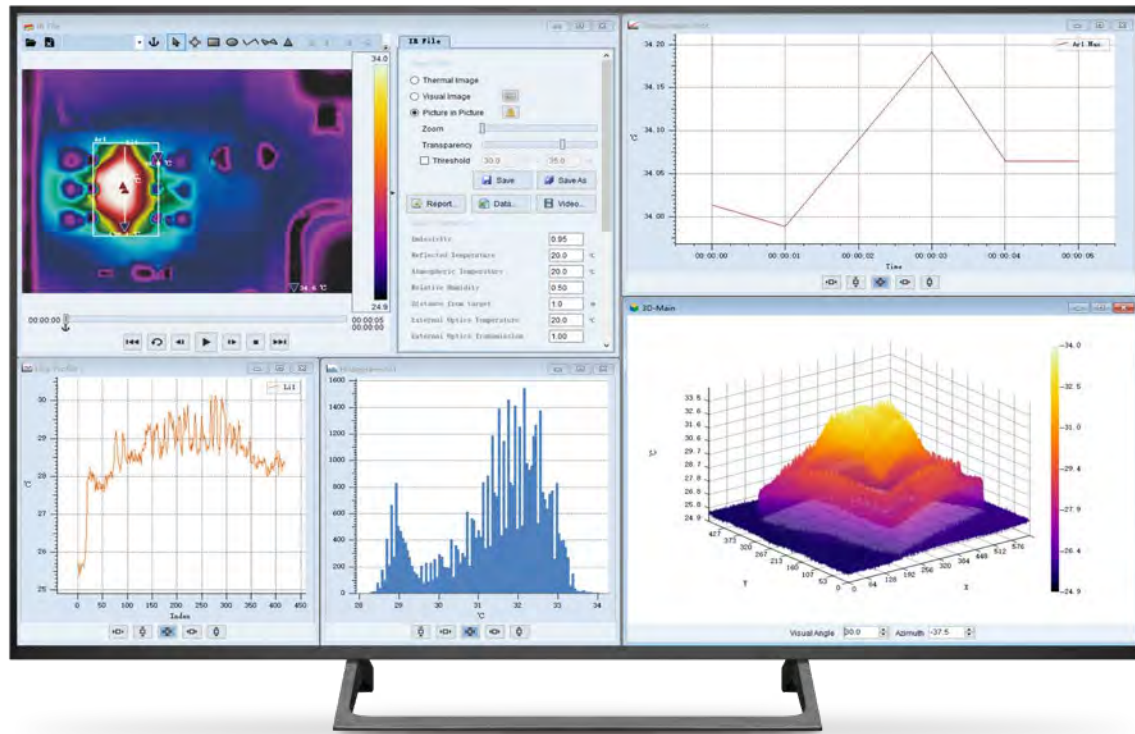
Exceptional Field Work

FOTRIC's fine-tuned new series is equipped to offer a superior experience in the toughest environments.

Enhanced with powerful analyzing features for accurate failure identification and advanced temperature differential calculations.



- Professional laser meter for distance and area measurement. (*Only for 340A series)
- Built-in temperature differential calculation for smart analysis.
- Full-range radiometric video for comprehensive post-analysis.
- Favorite images/videos quick selection within the gallery.
- Voice annotation via Bluetooth Headset.
- QR-code scan to save in Tags, for auto-naming of files.
- Outstanding battery performance for worryfree survey sessions.
- Ergonomic grip for comfortable long shifts.



Diversified Reporting Work Flow

- Analysis and report computer software, AnalyzIR is a standard configuration along with the camera.
- Fotric AnalyzIR software supports read-out of thermal measurements by temperature plot, Histogram and 3D graph.
- Fast and simplified reporting function with a variety of templates.



- Various Quick Transfer
- Easy-to-choose multiple data transfer options for better mobility.



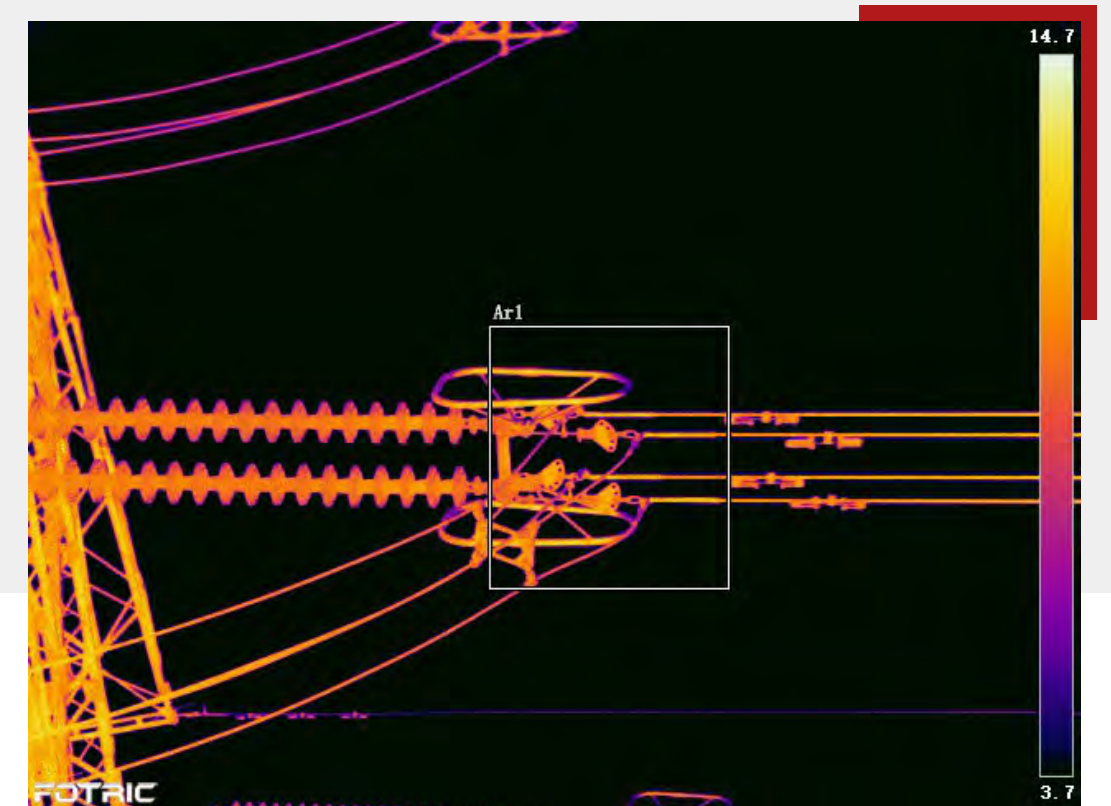
TurboFocus on the Go

Fast,
Precise,
Noiseless.

*Only for 340A series



- Long-distance objects can be accurately measured with easy-switching focus modes: Auto, Laser-aided, Continuous and Manual focus.
- FOTRIC TurboFocus is fast, precise and noiseless.
- Quick auto-recognition when interchangeable lenses are replaced, to ensure accuracy and quality of measured results.





FOTRIC 340 Series



348A	347A
346A	345M



Key Features	348A	347A	346A	345M
Infrared Resolution	640*480	480*360	384*288	320*240
Super Resolution (SR)	1280*960	960*720	768*576	640*480
Thermal Sensitivity(NETD)	<0.04°C@30°C			<0.05°C@30°C
Temperature Measurement Range (smart switch between)	-20°C to 150°C (-4°F to 302°F); 0°C to 650°C (32°F to 1202°F); 200°C to 1200°C (392°F to 2192°F);			-20°C to 150°C (-4°F to 302°F); 0°C to 650°C (32°F to 1202°F);
IFOV with Standard Lens (spatial resolution)	0.68mrad	0.91mrad	1.14mrad	1.36mrad
Digital Zoom (Continuous adjustment of roller)	1x to 8x			1x to 4x
User-definable Spot Markers	8			4
User-defined Measurement Boxes(rectangle or circle)	8			4
User-defined Measurement Lines	8			1
Minimum Focus Distance	0.25m		0.1m	0.1m
Focus Mode	TurboFocus speedy Intelligent Auto focus system for continuous, laser distance, graphic contrast, manual			Manual
Laser Measurement	Distance, Length and Area			—
Communication Interfaces	Wi-Fi*, Bluetooth*, USB 3.0, HDMI			

Common Features	348A	347A	346A	345M
Filed of View(FOV)	25°×19°			
AI Programmable Key	Yes, for quick access			
Geographic Location	Yes, support GPS			
Image Annotation	Favorites and AutoNaming			
Infrared Spectral Band	7μm~14μm			
Detector Type	Uncooled infrared focal plane detector			
Detector Pitch	17μm			
Frame Rate	30Hz			
Interchangeable Lens Options	Optional wide-angle lens,telephoto lens and ultra telephoto lens			Optional wide-angle lens and telephoto lens
Lens Recognition	Yes			
Storage Memory	128GB micro SD card			32GB micro SD card
Batteries (field-replaceable, rechargeable)	3 Lithium-ion rechargeable batteries (7.4V, 3500mAh)			2 Lithium-ion rechargeable batteries (7.4V, 3500mAh)
Ergonomic Design	Yes			
Standard Configuration	Infrared thermal imager, lens, lens cover, batteries, battery charger, power adapter, USB type-C to USB interface cable,micro HDMI to HDMI interface cable, SD card, SD card reader, accessory bag (wrist strap, 2 wrist strap holders, 2 M4 * 8 screws, lanyard, Allen wrench), information bag (packing list,user manual, calibration certificate, certificate of QC, certificate of inspection, warranty card, USB), portable soft bag, hard portable case			

* Indicates that this features is only available in certified regions.

Temp Analysis	
Accuracy	± 2°C or ± 2 %, whichever is greater (ambient temp between 15°C~35°C)
On-Screen Elevated Temperature	Temp Rising Test, Temp Differentiation Test
Temperature Measurement	Center-point and center-box
Highest/Lowest Temp Spot Mark	Yes,full-screen and measurement boxes both with highest/lowest temp spot marker
On-screen Analysis	Emissivity, Partially emissivity, Reflected temperaure, Ambient temperature, Humidity, Distance, IR window compensation
ROI Sound Alarm	Area alarm;high temperature alarm and low temperature alarm
Color Isotherms	High temperature, low temperature, and interval temperature
Image Display	
Display	Gorilla Glass Explosion-proof IPS LCD Display pixels: 1280*720Display size: 5inch (landscape)
Build-in Digital Camera (visible light)	13-megapixel,industrial grade digital camera
LED Light (torch and flash lamp)	Yes
Image Modes	Thermal, Digital camera , Picture in picture, Image fusion
Picture-in-Picture	Yes,resizable and movable
Palettes	16 standard palettes, 16 inverted palettes. 3 color isotherms
Temp Scale	Touch-screen, auto, manual
Minimum Temp Span (Manual)	2°C(3.6°F)

Data Storage	
Analyze Radiometric Image Data (On-screen)	Yes
Analyze Radiometric Video Data (On-screen)	Yes
Image File Formats	Standard JPEG with measurement data included
Video File Formats	Full radiation thermal image video in IRS format; standard MPEG4 non radiation video;
Gallery	Image preview and analyze, video preview and analyze
PC Software	Fotric AnalyzIR, WLIR
Voice Annotation	200 seconds on built-in microphone and speaker. Support Buletooth headset*
Text Annotation	Yes
Tags	Favorites, and QR-code scan Tags for auto naming
Data Transfer	Gallery data transfer via USB Type-C interface, SD card reader, and Wi-Fi FTP protocol*
Remote Display and analysis	Radiometric IR Video Streaming over USB type-C 3.0 interface; Non-radiometric video over HDMI interface
Auto Capture	Yes, 1Hz to 12Hz frame rate adjustable2s to 60m59s interval adjustable
Battery	
Battery Life	Over 4 hours per battery
Battery Charging Time	2.5 hours to 90% full charge
Battery Charging System	Two-bay battery charger with LED display (12V, 3A)
AC Operation	AC operation with included power supply (100V ac -240V ac, 50/60Hz)
Power Saving	User-selectable screen-o ffmodes

* Indicates that this features is only available in certified regions.

General Specifications	
Device Interface	Support USB Type-C 3.0, Micro HDMI and SD card
USB Interface	USB type-C type; conforms to USB 3.0 / 2.0 specification, supports USB OTG; USB 3.0 has a maximum speed of 5Gbps; USB 2.0 supports a maximum speed of 480Mbps, and is downward compatible with full speed (12Mbps) mode
HDMI Interface	Micro HDMI type,Comply with HDMI 1.4 specification, support 1080p image video transmission at 60Hz frame rate
SD Card Interface	Support SD 3.0, the highest speed is 104MB/s, hot plug is supported; support SD, SDHC, SDXC card, the maximum expansion is 2TB; with read-write indicator;
Laser Pointer	Independent key activation; Laser level: 2; Wavelength: 635nm; Power: <1mW
Operating Temperature	-20°C to +50°C(-4°F to 122°F)
Storage Temperature	-40°C to +70°C(-40°F~158°F)
Relative Humidity	<95%RH
Safety	EN 62368-1:2014+A11:2017 (Power Supply)
Vibration	2g (GB/T 2423.10-2008/IEC 60068-2-6:1995)
Shock	25g(GB/T 2423.5-2019/IEC60068-2-27:2008)
Electromagnetic Compatibility	EN 61326-1:2013 (immunity) EN 61326-1:2013 Class A (emission) FCC 47 CFR Part15 Class A (emission)

General Specifications	
Drop	Engineered to withstand 2 meters (6.5 feet) drop with standard lens
Enclosure Rating	IP54 (protected against dust, limited ingress; protection against water spray from all directions), GB/T 4208-2017/IEC60529:2013
Size (H x W x L)	312.8mm×123.3mm×139.2mm
Tripod	UNC ¼"-20 interface
Weight (battery included)	<1.0kg (lens not included)
Hard Case	Hard rubber: PC + ABS, Soft rubber: TPE,Magnesium alloy, Flame retardant grade: UL94 HB
Warranty	2 years (standard) for thermal camera, 10 years for IR detector
Recommended Calibration Cycle	2 years (assumes normal operation and normal aging)
Supported Languages	English,Spanish,Korean,Traditional Chinese

Optional Lens	348A	347A	346A	345M
Wide-angle	44°×34° (<0.1m)		44°×34° (<0.1m)	44°×34° (<0.1m)
Telephoto	12°×9°(<1.0m)		15°×11° (<0.25m)	15°×11° (<0.25m)
Ultra Telephoto	7°×5°(<3.0m)		7°×5° (<1.0m)	—

