

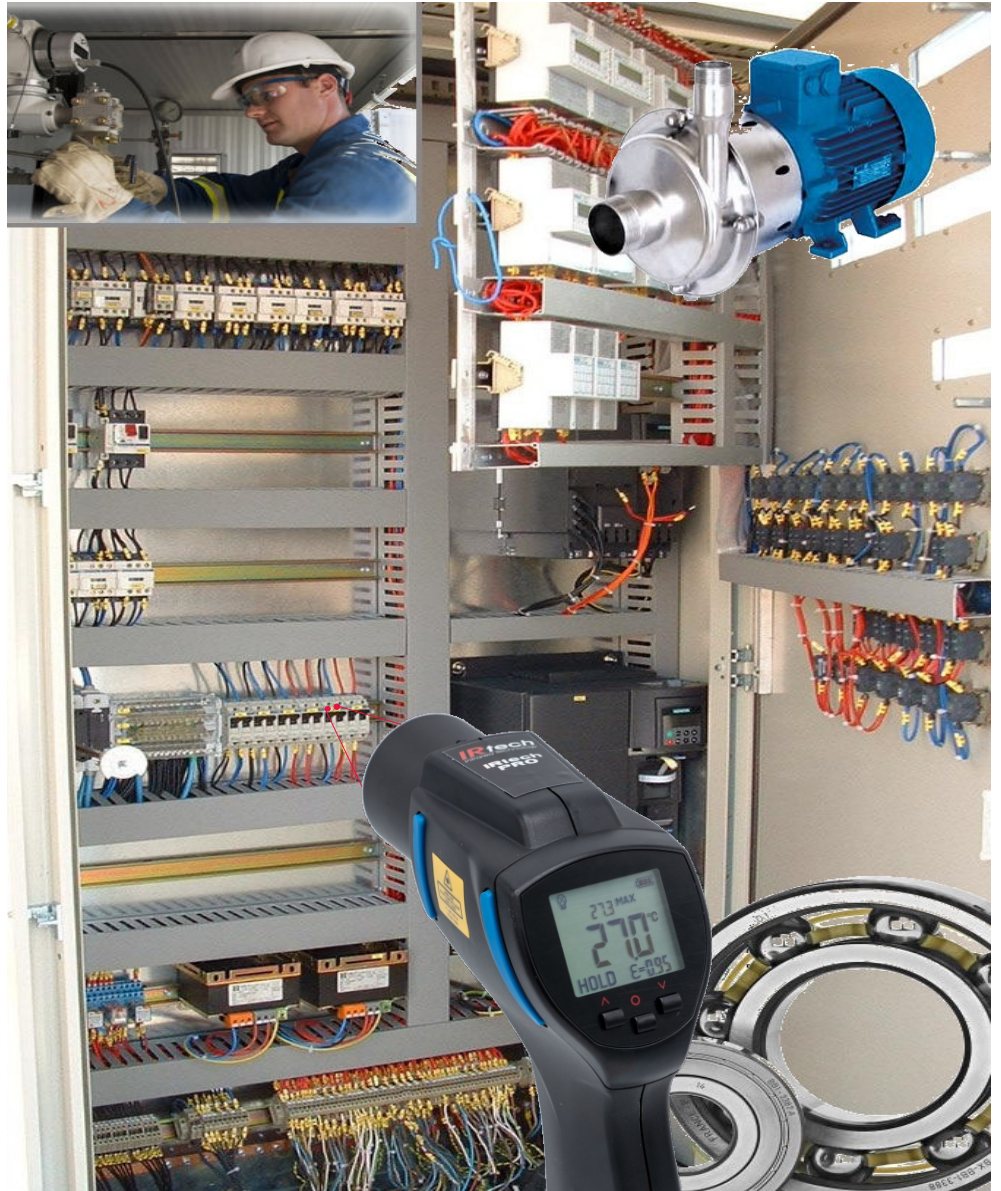
E instruments

IRtech Pro 880L

Portable Infrared Thermometers for maintenance applications

IRtech
Infrared Technology

- Temperature range -30 to 1300°C
- Optical resolution 60:1
- Dual laser pointer
- Thermocouple input (minidin)
- Large LCD display
3 colors backlight
- Emissivity settings
- Alkaline 9V batteries
- USB interface with
IR Windows software
- Datalogger up to 2000 measures
- Max, Min, Alarms audible features
- Report of Calibration



Each body, at temperatures above the absolute zero (-273°C or 0K), emits energy as electromagnetic radiation. When temperature rises, the intensity of this infrared energy increases. The temperature of the body surface can therefore be determined by measuring the intensity of this energy in a small spectral band: the infrared region. The instruments used to measure this energy and to calculate the related temperature are called infrared thermometers or non-contact thermometers.

Temperature measurements of a liquid or gaseous compound have been successfully made with thermoelectric or expansion thermometers, thanks to the good thermal exchange of the sensor with the fluid. With solid bodies, a good thermal exchange is difficult to be obtained and an additional measuring error should be considered. When the target is moving or is electrically hazardous, a contact temperature measurement can't be made. Non-contact IR temperature measurement could be the only solution to the above application problems.

www.eigroup.biz

Features are related to all models equipped with full configuration. On next pages you can find specific details.

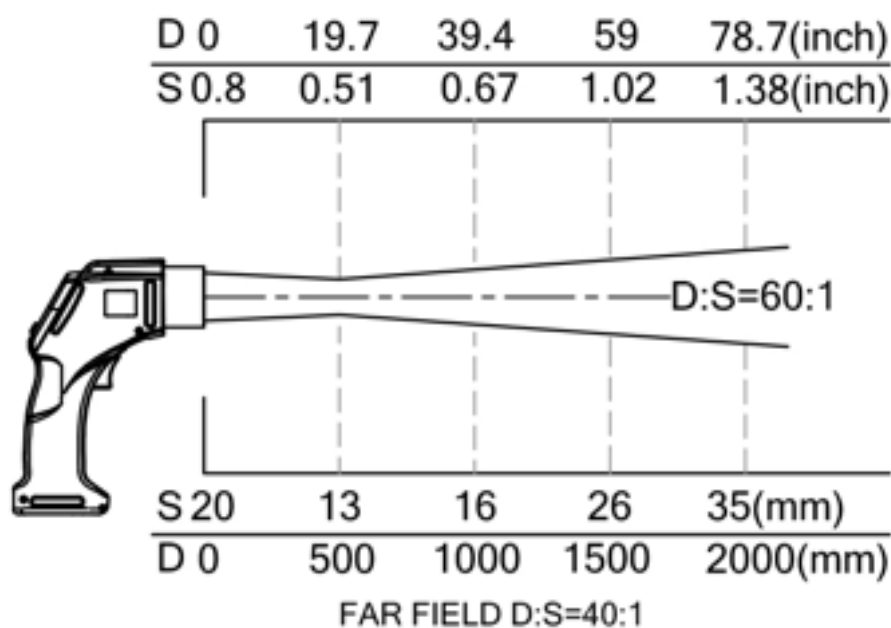


Models

Model	Code	Range	Optics	D:S	Laser
880L	S	-30 to 1300°C	16mm@1000mm	60:1	Dual

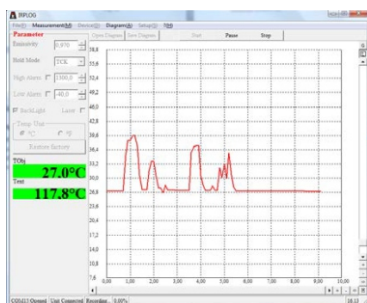
880L Accuracy $\pm 1\%$ or $\pm 1^\circ\text{C}$ Repeatability $\pm(0,5\%+0,5^\circ\text{C})$ Response time : 300ms

*At $23\pm 5^\circ\text{C}$, emissivity = 0.95



Memory, USB and Windows Software

IRtech Pro L has 2000 non volatile memory where you can store temperature values. It can be downloaded on PC with the software with ID tag for each data.. IRPlug can work on line with graph view. Data can be save in excel format. Instrument setup can be programmed.



Common specifications

Emissivity: Adjustable 0.10 - 1.00

Digital interface:

USB (cable and software included)

Battery: 9V Alkaline battery or USB

Battery life:

12 hours with laser/backlight on

24 hours without laser and backlight

Laser: Class II (<1mW) dual

Tc : Thermocouple K input minidin std connector -40°C to +400°C, Acc $\pm 1\%$ or $\pm 1^\circ\text{C}$

Functions: Max, Min and Scan/Hold

Alarms: High and Low adjustable by keyboard with audible and visible with enable/disable

Working temperature/humidity:

0 to +50°C 10-95% RH non condensing

Dimensions : 210x160x70 mm

Weight : 450gr

Optics and Tc measurement

IRtech Pro L has the optical body in metal that grant advanced and accurate optics with a rugged protection for the lens. The minidin input allow connection for any thermocouple Tc K probe so it can be used to compare the non contact reading. It can be displayed simultaneously on Lcd display

Alarms

IRtech Pro L has two programmable setpoint of audible and visible alarm. In standard measurement the backlight is set to Green. If high level of alarm will be active the backlight is set to Red. If low level of alarm will be active the backlight is set to Blue.

Alarms can be disabled if not used.



Ordering Code

Code	Model
Pro (L)	includes rigid carrying case, 9V battery, USB cable, Software, Thermocouple K & instruction manual
Table A Range	
880L	-30 - 1300°C
Table B Optics	
S	See table
Table C Report of Calibration	
CC	none EA traceable with data
Pro 880L S	Typical ordering code

Specifications may change without notice